

# AEROSPATIALE AIRCRAFT DIVISION

## FLIGHT TEST FACILITIES

**G. DEFER**

Flight test Director

**G. DESTARAC**

Technical Assistant Manager

Flight Test Department

AEROSPATIALE

Toulouse - France

The development of new aircraft requires very heavy investments. Among those, flight test, even if they only correspond to an average of eight per cent of the development costs, have to be dealt with an economical approach : that's what Aerospatiale tries to do on his main base in TOULOUSE BLAGNAC since nearly three decades. This paper describes the present situation which is the result of a progressive evolution, culminating today with the A.340 flight test campaign.

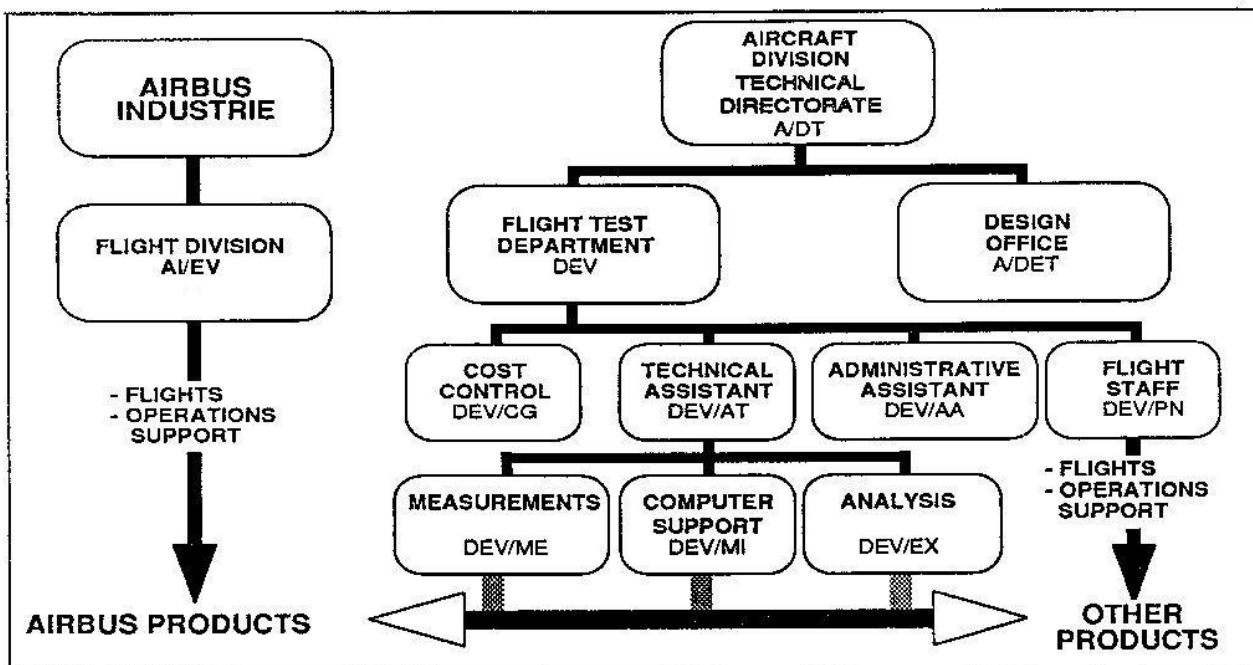
### FLIGHT TEST OPERATIONS IN TOULOUSE

The Aerospatiale Aircraft Division Flight Test Department (DEV) is responsible for the overall flight test means for all the planes developed in Toulouse. It implies either the pure Aerospatiale products (today essentially the derivative version of the C160 Transall), or products realised as part of the

GIE AIRBUS, ATR and soon GIE SATIC (Franco-german GIE in charge of the Super Guppy successor : A300/600 Super Transporter aircraft).

According to the case DEV supplies the full flight test function : instrumentation, data processing, flight test operations and customer support operations (GIE ATR, GIE SATIC and Aerospatiale products). For AIRBUS, the flight test and operations, and customer support are covered by the Airbus Industrie's flight division.

In any case, the DEV test facilities are placed at the disposal of all the projects. It permits to make them profitable by distributing the amortization on more aircrafts. It also gives a more continuous workload despite the fact that development activity is by nature very discontinuous. This is well known problems faced by all aircraft manufacturers.



FLIGHT TEST ORGANIZATION